



40 Avenue N.E. Park & Area Improvements

Stakeholder Report Back: What We Heard report
October 2021

Project overview

The pop-up park being created at City vacant land at Centre Street N and 40 Avenue N.E. will be for interim (temporary) use. The long term vision of the Green Line LRT project is to go further north than the current plan in stage one which stops at 16 Avenue N. Therefore, the park use will need to change when the Green Line LRT project is expanded further north. There is no set date for the Green Line LRT expansion at this time.

We have developed two design options for the park to increase activity and create stronger community connections.

We are also implementing mobility improvements in the communities of Greenview, Greenview Industrial Park, Highland Park and Winston Heights / Mountview. We are making these enhancements to improve mobility for people who walk, wheel and drive and to complete the missing links in our mobility network.

Program funding

This project is part of the [Established Areas Growth and Change Strategy](#), a program that supports projects focused on our existing communities so they can continue to be vibrant and successful for decades to come. The program provides funding to support short-term (1-3 years) public realm improvement projects in established communities where growth and change are happening.

Timeline



Fall 2022 - Construction is expected to be complete



Spring 2022 - Construction begins



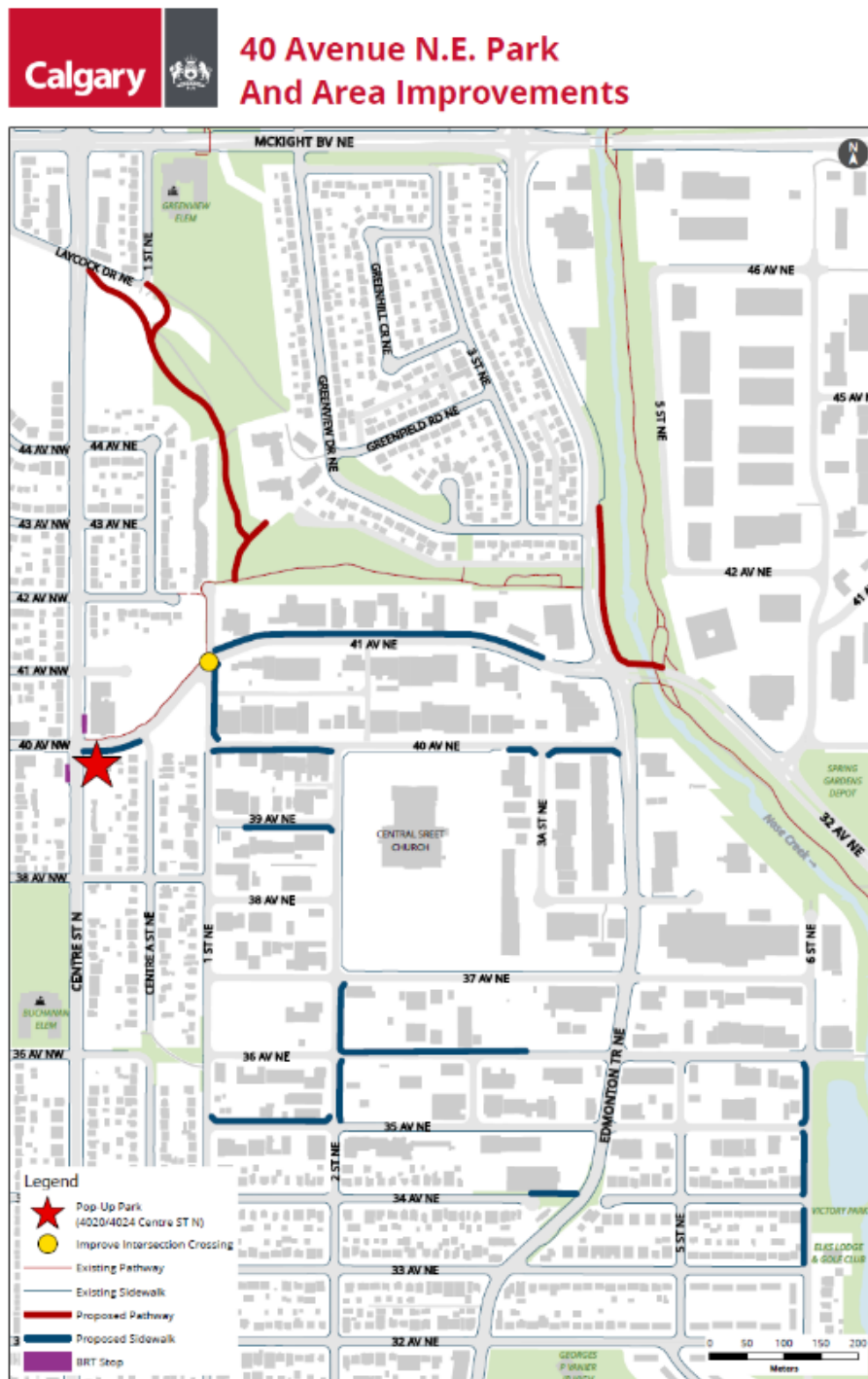
Fall 2021 - Report Back - What We Heard report



Summer 2021 - Design options review and online feedback

Project Area Map

The proposed pop-up park is located on City vacant land at Centre Street N and 40 Avenue N.E., indicated by the red star, and the sidewalk and pathway improvements are indicated by blue and red lines – see legend.



[Click on image to be directed to the portal map.](#)



40 Avenue N.E. Park & Area Improvements

Stakeholder Report Back: What We Heard report
October 2021

40 Avenue N.E. Temporary Pop-up Park

Engagement overview

Due to COVID-19 restrictions in place in 2021, the engagement strategy focused on gathering public input online. The City of Calgary's Engage portal page was used to collect feedback from August 3 to September 17, 2021 on a number of specific questions and a drop-in virtual session for participants to speak directly to the project team was held on August 18, 2021. All responses can be found in the verbatim section. The online public engagement can be found here (<https://engage.calgary.ca/40AveNEPark>).

Communications overview

A communications outreach plan was developed to support the engagement process by ensuring public awareness of the 40 Avenue N.E. Park & Area Improvements project objectives, timeline, trade-offs, and opportunities to provide feedback. We communicated to residents, schools and businesses operating in the communities of Thorncliffe/Greenview, Greenview Industrial Park, and Winston Heights/Mountview where the improvements are being implemented. We communicated through a variety of online and traditional communications channels (see table below) to make Calgarians aware of the online engagement activities listed on our website at engage.calgary.ca/40aveNEPark.

During our engagement, we had a total of 2,040 citizens visit the website and we received a total of 152 contributions for this project.

Overview of Communications Outreach Campaign	
Social media	Organic and paid content posts were shared on The City of Calgary's social media platforms including Facebook, Twitter, NextDoor and Instagram.
Engage web page	Dedicated project web page (engage.calgary.ca/40aveNEPark) created to share information about the project and opportunities to provide feedback.
Mailed postcards	Postcards sent to households and businesses promoting engagement.
Information letters	Sent to businesses informing them of the mobility improvements happening next year.
Road and pedestrian signs	Signs promoting engagement were placed in high traffic areas where people drive and walk.
Public information board	Large board with posters on it promoting engagement placed at The City vacant land.
Partner network	Stakeholders were encouraged to share engagement opportunities with their membership.
E-newsletter	Launched subscriber based e-newsletter.



40 Avenue N.E. Park & Area Improvements

Stakeholder Report Back: What We Heard report
October 2021

How we use your input

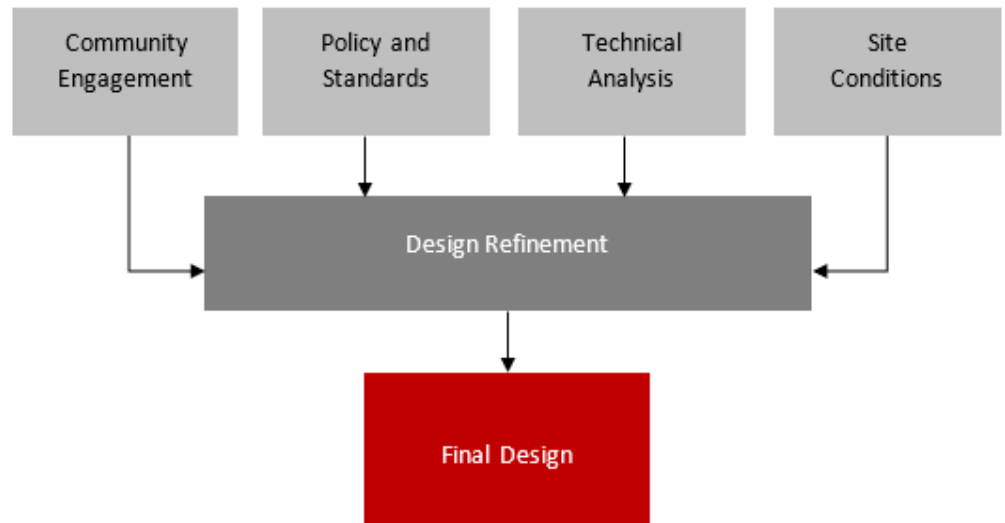
Feedback gathered from the public and stakeholder engagement is reviewed with City of Calgary policy and standards, site conditions, and technical design analysis then refined in the final design.

What we asked

Respondents were asked to [review the two design options](#) (Design Option 1 - Basketball Court and Covered Picnic Tables / Design Option 2 - Community Garden and Natural Play Area) and then answer four questions for each option.

Those questions were:

- What do you like about Design Option (1 or 2)?
- What would you do to improve Design Option (1 or 2)?
- Are there any other recreational activities you would like to see included in Design Option (1 or 2)? and
- Do you have any additional questions regarding Design Option (1 or 2)?



What we heard

The themes outlined in this section represent those that were mentioned by respondents. All written comments have been reviewed by the project team and have been included in the [Verbatim Comments](#) section of this report.

The engagement was active from August 3 until September 17, 2021 and collected 152 contributions from 140 respondents. Most respondents favored **Design Option 2 - Community Garden and Natural Play Area**, noting that a green space integrated with community garden that allowed for a variety of physical activities and would serve a wider range of residents.

Summary of Input

	Design Option 1 Basketball Court and Covered Picnic Tables	Design Option 2 Community Garden and Natural Play Area
	Themes	Themes
What do you like about Design Option (1 or 2)? <i>See Columns</i>	<p>Promotes active living and social interaction</p> <ul style="list-style-type: none"> Most participants felt that the activation of this site would be a welcome addition to the community. <p>More flexible recreational space</p> <ul style="list-style-type: none"> Some participants saw the merit of this design, while others commented that it was too age specific and that there are other basketball courts in the area. <p>Covered Picnic Tables</p> <ul style="list-style-type: none"> Some participants like the idea of including covered seating, regardless of which option is developed. 	<p>Appeals to a larger segment of the local community</p> <ul style="list-style-type: none"> Most respondents responded positively to the concept of a community garden / space with an open area for flexible social / recreational activities that would promote active living and increase positive social interactions. <p>The sensory / natural area</p> <ul style="list-style-type: none"> Many respondents indicated that they liked the idea of an imaginative sensory / natural play area. <p>Covered seating / swing</p> <ul style="list-style-type: none"> Many respondents indicated that they would like to see a covered seating area / swing incorporated in the final design. <p>Landscaping</p> <ul style="list-style-type: none"> Some respondents indicated that careful consideration of landscaping and planting choices would benefit the design. A blend of natural plantings and community garden plots would enhance the design.

What would you do to improve Design Option (1 or 2)? Please tell us why. <i>See Columns</i>	<p>Safety</p> <ul style="list-style-type: none"> Some participants were concerned about safety of the site, commenting on both physical design of the site to enhance citizen safety, as well as concerns regarding 	<p>Safety</p> <ul style="list-style-type: none"> Some participants were concerned about safety of the site, commenting on both physical design of the site to enhance citizen safety, as well as concerns regarding increased criminal activity. Both lighting and fencing
---	---	--

	<p>increased criminal activity. Both lighting and fencing were cited as areas that should be addressed. Concerns were also expressed regarding noise abatement for nearby residents.</p> <p>Multi-activity area with blended garden options</p> <ul style="list-style-type: none"> Many respondents indicated that they would prefer that basketball was not the focus of the park preferring instead a hybrid, multi-activity area that incorporated a community garden into the design of an accessible space, blending natural vegetation with garden plots. <p>Full court basketball</p> <ul style="list-style-type: none"> A few respondents indicated that they would prefer a full court basketball court instead of the suggested design option, while many other respondents indicated that they would prefer no basketball at all. 	<p>were cited as areas that should be addressed.</p> <p>A variety of additional amenities All suggestions will be reviewed by the project team and may be incorporated into the final design based on budgetary considerations.</p> <ul style="list-style-type: none"> There were numerous additional amenities suggested including: More natural play structures, climbing elements, benches/seating/boulder seating, picnic area, outdoor class space, shelter or windbreaks, a maze within the community garden, walking paths, a small tipi, playground equipment (swing set, disc swing, GAGA ball court, sandbox) , running path around the perimeter, outdoor fitness equipment, a water feature/splash park, an apiary, slack line, zipline, giant game board for chess or checkers, shuffleboard, bicycle pump track, bike racks, soccer nets / field, fenced off leash area, and artificial grass.
--	--	--

<p>Are there any other recreational activities you would like to see included in Design Option (1 or 2)? <i>See Columns</i></p>	<p>Options for all age groups</p> <ul style="list-style-type: none"> Some respondents would like to see an area for activities for preschool/ elementary aged children as well as quiet space for all ages. <p>A variety of additional amenities All suggestions will be reviewed by the project team and may be incorporated into the final design based on budgetary considerations.</p> <ul style="list-style-type: none"> There were several alternative amenities suggested including: Larger natural play area, kids 	<p>A variety of alternative activities</p> <ul style="list-style-type: none"> There were several alternative activities suggested including: Seniors group activities, Tia Chi, yoga, winter activities (skating, fire pit) hopscotch, GAGA ball, Pickle ball, mud kitchen, adult oriented park games, theater, music, and life size board games.
--	--	---

	<p>playground, swing set, outdoor exercise equipment, perimeter scooter/bike path, dirt pump track, Ping Pong, Tether ball, Pickle ball, beach volleyball, mini splash park, soccer, GAGA ball court, hopscotch, tennis / badminton courts, and a skating rink.</p>	
--	---	--

<p>Do you have any additional questions regarding Design Option (1 or 2)? <i>See Columns</i></p>	<p>Safety</p> <ul style="list-style-type: none"> Some participants were concerned about safety of the site, commenting on both physical design of the site to enhance citizen safety, as well as concerns regarding increased criminal activity. Both lighting and fencing were cited as areas that should be addressed. Concerns were also expressed regarding noise abatement for nearby residents. <p>Multi-activity area with blended garden options</p> <ul style="list-style-type: none"> Many respondents indicated that they would prefer that basketball was not the focus of the park preferring instead a hybrid, multi-activity area that incorporated a community garden into the design of an accessible space, blending natural vegetation with garden plots. <p>Options for all age groups</p> <ul style="list-style-type: none"> Some respondents would like to see an area for activities for preschool/elementary aged children as well as quiet space for all ages. 	<p>Safety</p> <ul style="list-style-type: none"> Some participants were concerned about safety of the site, commenting on both physical design of the site to enhance citizen safety, as well as concerns regarding increased criminal activity. Both lighting and fencing were cited as areas that should be addressed. <p>Appeals to a larger segment of the local community</p> <ul style="list-style-type: none"> Most respondents responded positively to the concept of a community garden / space with an open area for flexible social / recreational activities that would promote active living and increase positive social interactions. <p>Landscaping</p> <ul style="list-style-type: none"> Some respondents indicated that careful consideration of landscaping and planting choices would benefit the design. A blend of natural plantings and community garden plots would enhance the design. <p>Community Garden</p> <ul style="list-style-type: none"> Several additional questions dealt specifically with the details of the administration and maintenance of the proposed community garden plots. Once the final design is completed, The City will work with community partners to develop activation plans for the site.
---	---	---



40 Avenue N.E. Park & Area Improvements

Stakeholder Report Back: What We Heard report
October 2021

The project team has reviewed all questions and comments submitted by participants in the [Appendix 1 – Verbatim Comments](#) section of this report. We will keep this feedback top-of-mind as we progress through the design and planning process. While it's too preliminary to speak to details and specifics, here are a few clarifying comments based on recurring questions/comments that may be helpful:

- The renderings are conceptual drawings, and scaled blueprints of the final designs will be developed and shared with the community prior to construction.
- Landscaping decisions will absolutely be repurposed or integrated into future plans.
- Once the final design is complete, The City will work closely with community partners to develop activation plans for the site.

Do you have any additional questions?

As part of the online engagement, participants were also encouraged to submit questions that were responded to by the project team while the engagement was active. The questions submitted were about specific area improvements and can be found in the [Question and Answer](#) section of this report.

Next steps

The input provided in this phase of the engagement has been shared with the project team and will be used to inform the final design. The final design will be posted to the project site once complete.

Appendix 1 - Verbatim Comments

All comments below are as received. The comments are divided into questions asked. They are unedited, including spelling, grammar, use of contractions, etc. The only exception is where there is profanity or personally identifying information, this is indicated in brackets [removed].

What do you like about Design Option 1?
<ul style="list-style-type: none"> We like almost nothing about Design Option 1, except the trees & potentially the picnic shelter. This is an amenity for a re-developing area, but it will disappear, as it is "temporary". How can the site continue to be some kind of amenity for the area? Can the underground space here be reserved for a future parkade as a park & ride spot for future GreenLine users? We'd prefer native or climate-adapted species for the trees, w/ evergreens for the barrier.
<ul style="list-style-type: none"> Sheltered space with picnic table, benches and
<ul style="list-style-type: none"> I feel this space can be used by a greater number of people than design 2
<ul style="list-style-type: none"> I do not like this design that much
<ul style="list-style-type: none"> The basketball courts and picnic areas
<ul style="list-style-type: none"> The Trees.
<ul style="list-style-type: none"> Picnic tables
<ul style="list-style-type: none"> I think either option is better use of the current space. I think with the development in the area we could see more seniors using the seating area and it's good mix for both young and old
<ul style="list-style-type: none"> Absolutely nothing. This is not a great idea.
<ul style="list-style-type: none"> I like the covered picnic areas, this isn't something commonly seen in parks.
<ul style="list-style-type: none"> As a church that runs an after-school program for Buchanan School and also has Friday youth events, Highland Church feel that this option would be ideal for some off-site activities.
<ul style="list-style-type: none"> I like that it offers something new in our community. We currently do not have a basketball court (the hoops we do have are in a parking lot at the community center; which is unsafe if people drive quickly through the lot which I've witnessed), and because we have many young families with kids that I know would love to use this.
<ul style="list-style-type: none"> Good use of small footprint with the green space around the paved area.
<ul style="list-style-type: none"> Any community space here would be an improvement. Relatively general-use space, with some shelter - but not particularly pretty/welcoming/inspiring
<ul style="list-style-type: none"> The east side of centre street is lacking in recreation options for the kids so a basketball court would be optimal.
<ul style="list-style-type: none"> Comments from a ten year old: The basketball courts and benches are great. There is lots of room to play.
<ul style="list-style-type: none"> Idea always looks nice on paper.
<ul style="list-style-type: none"> I like the covered picnic shelter
<ul style="list-style-type: none"> The covered picnic tables
<ul style="list-style-type: none"> Multi purpose areas, can use in various weather conditions
<ul style="list-style-type: none"> Multi sport option for younger kids
<ul style="list-style-type: none"> Everything
<ul style="list-style-type: none"> More recreational spots is always great. I like the idea of bike racks being added to make it more accessible for people.
<ul style="list-style-type: none"> Not a lot
<ul style="list-style-type: none"> I don't. This city keeps paving over its green spaces, stop it.



40 Avenue N.E. Park & Area Improvements

Stakeholder Report Back: What We Heard report
October 2021

<ul style="list-style-type: none"> • I like the shelter
<ul style="list-style-type: none"> • The flexibility of the space for fitness activities is attractive. As well, the ability to add bike racks would be nice!
<ul style="list-style-type: none"> • I like that this design has greenery but can still be used as a place for exercise or just some fun. I personally would love to see a basketball court closer to my community will also allow the kids to get fresh air
<ul style="list-style-type: none"> • Don't really like it. There is already a park in the school down the street.
<ul style="list-style-type: none"> • No complex equipment needs to be purchased. Allows for outdoor meeting places but almost useless in winter which endure for the majority of the year.
<ul style="list-style-type: none"> • Basketball court, bike racks, picnic tables beside Tim hortons
<ul style="list-style-type: none"> • It influences being active
<ul style="list-style-type: none"> • The space for picnics and it could keep teens active.
<ul style="list-style-type: none"> • This offers something different in the community, instead of community gardens, which there are a lot of.
<ul style="list-style-type: none"> • Potential to use space for rec programs, and have family events at picnic tables.
<ul style="list-style-type: none"> • Promotes physical activity and personal interaction.
<ul style="list-style-type: none"> • Openness.
<ul style="list-style-type: none"> • No. It's on centre street. Basket balls bounce. What if one goes into the street. Bad idea for safety
<ul style="list-style-type: none"> • I like the flexibility of space and how it can be used to stay active through sports. I also like covered picnic tables.
<ul style="list-style-type: none"> • That is has an area for sports
<ul style="list-style-type: none"> • I like the sport element of this design. The circular design allows visibility from all areas.
<ul style="list-style-type: none"> • Sheltered picnics! I feel like lots of new Canadian families enjoy picnics - it's a nice bridging activity towards more outdoor activities. Eating outside during the pandemic is also really wise. Also love bike racks.
<ul style="list-style-type: none"> • Covered picnic tables
<ul style="list-style-type: none"> • Basketball court, getting youth outdoors
<ul style="list-style-type: none"> • I like the picnic area, and court and set up.
<ul style="list-style-type: none"> • Love the fitness options for youth to adult ages, a court is a great idea! Would be good to add a simple running path to that as well.
<ul style="list-style-type: none"> • Better to have sports.
<ul style="list-style-type: none"> • Design option 1
<ul style="list-style-type: none"> • I like the concept, however, we are getting more homeless persons in the area. My fear is it will attract homeless and drug use to the park making it undesirable for what it was intended for.
<ul style="list-style-type: none"> • Trees mixed with recreational activity
<ul style="list-style-type: none"> • Picnic area and opportunity for sport
<ul style="list-style-type: none"> • I don't like this option because there are already basketball courts and picnic tables in school playgrounds & other spaces in the community
<ul style="list-style-type: none"> • Active programming
<ul style="list-style-type: none"> • Only the sheltered space
<ul style="list-style-type: none"> • Great for the new complex that is going up west of center st.
<ul style="list-style-type: none"> • The basketball courts
<ul style="list-style-type: none"> • the picnic tables are a good idea, except i would add seating such as a couple of benches for those who want to sit with only one other person. or alone, or who might require a back (support while sitting), and not under cover. include SMALL bushes/trees, flowers



40 Avenue N.E. Park & Area Improvements

Stakeholder Report Back: What We Heard report
October 2021

• Don't have a basketball court in the area but many small bench parks that option 2 is repeating
• Not much
• I don't like Option 1. We have basketball courts across the street at Buchanan. I would not want my kids crossing centre to play basketball.
• The trees and the basketball courts. The covered picnics are for year-round use.
• Great to see any activation
• Lots of trees!
• I like the basketball courts.
• I like basketball court that's free for those future athletes to use. I like that the space can host yoga, fitness classes, art classes.
• physical actives in summer time.
• Picnic tables, bike racks and sidewalk addition.
• the benches, the picnic shelter
• I like the multi use aspects and simple design
• Really like the picnic table shelter. It's a perfect place to get refuge from the sun on hot summer days.
• I like a basketball court. We need more in the city but...
• I like the benches and trees .
• The covered picnic areas & basketball court. Lots of people would use it if it were available
• Better for teens and tweens
• The picnic shelter
• The trees and benches would likely be well utilized due to Tim Hortons being across the street, and it is possible that the school at the old Center Street Church (Wei King) would use the basketball courts
• Nothing
• Sheltered space
• Its accessibility, its a fun, organic layput and the trees
• It looks more inviting.
• There are lots of schools and young people around who would love a new space to play. Families can have an outdoor experience without going too far from their home.
• I like the picnic tables that are sheltered and the options for programs.
• Shelter and picnic tables,trees and Benches
• That it is a place to meet and gather, to have a picnic or community outdoor activity. Opportunity for movie in the park. Also the basketball court
• i like the benches and the trees
• Recreational space and a green area.
• Great to have some recreational space—a good idea
• Not that interesting, more just for kids and parents.
• either one would be a great improvement to the area, thanks
• I like that basketball is a sport that appeals to many age groups and cultures. Happy you are creating free rec opportunities in this neighborhood
• I think this area would benefit the youth in this area. Many residents already have yards. I am a gardener and still prefer this option. It looks more aesthetically pleasing to the eye. Kids would really enjoy this. Youth need to be encouraged to socialize and participate in physical activity.
• Areas for kids to play
• Trees blocking picnic area from main road.
• Seems to be more inclusive for multiple age groups and promote physical activity.



40 Avenue N.E. Park & Area Improvements

Stakeholder Report Back: What We Heard report
October 2021

• More recreational space and gives the chance of more recreational activities within the neighborhood
• The covered picnic tables
• Nothing. There's a park a block away. Stop wasting money. \$230k for a temporary park? Give your head a shake. You should be fired
• Not much, it's an older community with very few children to play basketball.
• It's targeted to older kids and adults not just little kids. I like the shelter
• I like the idea of the covered picnic tables
• it is a place for children to participate in activity
• It's better than option 2
• It allows community members of all ages, from school-age children to teenagers to adults to enjoy the space, especially with the inclusion of basketball courts. I like the design of 3 courts where it's more efficient use of space. This is my first choice!
• Dislike
• I like the shaded picnic tables. That's it.
• The idea of having a location in the community for kids and adults to play sports, hangout, and relax is very uplifting! Center street is a thriving family oriented community where introducing a basketball court and picnic seating will bring the most joy for all to experience. I love the idea of the basketball court!!
• Sddfsdfs
• This would be our first choice.
• I like the idea of having a place for youth to go.
• I like the basketball courts and picnic area.

What would you do to improve Design Option 1? Please tell us why.

• We don't need more public basketball hoops in our neighbourhood; we already have some at Buchanan School & James Fowler School (respectively less than 2 & 5 blocks away), and they aren't over-capacity. Basketball dribbling & backboard use can be very loud and invasive for the adjacent, fairly intensive, residential use that this area is already transitioning to. Serious consideration could be given to lighting & security. Opportunity to do something very interesting vs what has been proposed.
• I would not install a basketball court.
• not sure how well the space can be shared among different users
• More than two picnic tables, spaced apart more
• I believe there is better ways to include a wider demographic in this social space (basketball courts most likely engage males from 12-17 although I don't have stats to back that up). There is a basketball court at the school across the street and from what I have observed it does not get activated very much.
• I think this design requires some lighting in the park, and could you with more seating. Also how would this park be used during the winter months?
• I wish there were elements appealing to young children also. There are a lot of young families in Highland Park.
• Another option, instead of a basketball court, are nets for tennis/badminton. This would truly be a new and different option that would enhance the community.



40 Avenue N.E. Park & Area Improvements

Stakeholder Report Back: What We Heard report
October 2021

<ul style="list-style-type: none"> • A basketball court like this has limited use - it's not a full court for games but young kids (mine) wouldn't likely play here because the hoop height presumably would be too high. Moreover there are basketball courts at most schools including some nearby.
<ul style="list-style-type: none"> • More landscaping along street, more interesting/inviting/multi-use court area
<ul style="list-style-type: none"> • A bike rack and perhaps a few swings.
<ul style="list-style-type: none"> • Comments from a ten year old: A play structure would be fun.
<ul style="list-style-type: none"> • I would suggest using 4 person square picnic table like Mount Pleasant Art Centre - community garden area. The larger tables will attract homeless to sleep on benches or tables. (We have enough of that problem right now in the community.) Buchanan School has 5 basketball nets which are well used with great space to run around so not sure adding 4 more nets so close to traffic area is wise. Make the basket ball nets kid sized rather than adult sized (lower and smaller).
<ul style="list-style-type: none"> • More trees
<ul style="list-style-type: none"> • Just basketball courts and not much else to encourage children to play
<ul style="list-style-type: none"> • More benches, fire pits if able in park this size
<ul style="list-style-type: none"> • More options for kids of all ages in the area, currently designed for older kid use only
<ul style="list-style-type: none"> • Adding bike racks.
<ul style="list-style-type: none"> • maybe plant some fruit bearing trees in the area.
<ul style="list-style-type: none"> • Remove basketball court
<ul style="list-style-type: none"> • Not pave it over. The city needs actual, beneficial, and accessible green space for psychological wellness.
<ul style="list-style-type: none"> • I dislike the lack of young children activities. Our communities are filling with younger children, more than ever and love the idea of another, easily accessible place to play!
<ul style="list-style-type: none"> • Instead of a basketball court, would a multi-use court be possible so people can play volleyball, badminton, etc.
<ul style="list-style-type: none"> • Probably add fence around the courtyard so if you ever do install more greenery or other thing we would get damaged from the basketball/the ppl that are playing on the court.
<ul style="list-style-type: none"> • Chained fence instead of cable fence - the area is full of traffic. Add more picnic tables because 1 sheltered area is not enough.
<ul style="list-style-type: none"> • Find something that can be used year round and consider security. This is a pretty rough area. I would never take my kids here.
<ul style="list-style-type: none"> • Keep it well lit with lights
<ul style="list-style-type: none"> • Still try to find places for boxed garden
<ul style="list-style-type: none"> • More natural space, trees especially.
<ul style="list-style-type: none"> • Would be nice to have a proper basketball court so that people could play a game; I realize most of the time it would be 3 on 3, but if there was a possibility for a proper game, that would be nice.
<ul style="list-style-type: none"> • Add more opportunities for natural play. More difficult to do any other activity around a basketball court that could have balls flying around. Less safe for young kids.
<ul style="list-style-type: none"> • Would be of value to older kids and adults. Incorporate some mom/tot friendly activities as well
<ul style="list-style-type: none"> • Openness so that crime and homelessness cannot set in.
<ul style="list-style-type: none"> • Don't do this one!
<ul style="list-style-type: none"> • I would add a small rope-dome climbing structure for kids to stay active while adults finish eating their picnic food. It shouldn't be expensive to install and will provide minimal entertainment for kids age 5-10.
<ul style="list-style-type: none"> • It's not an actual basketball court. I would think this isn't as good as a full sized court for most people who are interested in playing. The chain link fence will be ugly. Lots of tarmac and not enough green space.



40 Avenue N.E. Park & Area Improvements

Stakeholder Report Back: What We Heard report
October 2021

<ul style="list-style-type: none"> I would want this design to be accessible, from the pathway, to the tables to even the basket ball hoops. A basketball hoop which can be lowered allows children, seniors and those in wheelchairs to share in the game.
<ul style="list-style-type: none"> Skip the basket ball court and do a hybrid of option one and 2
<ul style="list-style-type: none"> Adding that multi sport program is a great idea
<ul style="list-style-type: none"> I would like to see something for younger children to play on. This way a family could have a picnic and all age kids can play. Also add the mini library here as well.
<ul style="list-style-type: none"> If you could add a little library and garden to this it would be the perfect mix.
<ul style="list-style-type: none"> Make it pickleball courts instead of basketball.
<ul style="list-style-type: none"> Love the picnic area . So it can be used by anyone Also have a few park benches and street lights
<ul style="list-style-type: none"> No covered areas and keep the landscaping low. Policing would also need to be done.
<ul style="list-style-type: none"> Something to break up the traffic noise from Centre Street
<ul style="list-style-type: none"> Would be better with a net at each end so that a game could be played.
<ul style="list-style-type: none"> Use design option 2 instead.
<ul style="list-style-type: none"> Bike racks
<ul style="list-style-type: none"> I'd remove it. There is already a basketball court a block away at the school. It doesn't seem community focused.
<ul style="list-style-type: none"> I would be more transparent that golf course that was more recently owned by a different third party as it can start a blame game and causes friction in the community.
<ul style="list-style-type: none"> take out the basketball court, this idea only gives use to people under 30 (mostly males) who may play, and it excludes anyone over 40 or older.
<ul style="list-style-type: none"> Plant heavier, on Edmonton trail and 16th, and in tuxedo park we have green spaces which are all just grass, they are highly underused because it's more scenic to just visit Confederation or the likes which offers grass patches but distracts from the road with trees and shrubs
<ul style="list-style-type: none"> Make a standard court
<ul style="list-style-type: none"> Do not implement design 1.
<ul style="list-style-type: none"> More trees, outside of the basketball courts there is lots of dead space. More native plants would also be nice to help to attract birds, bees, and other pollinators.
<ul style="list-style-type: none"> Lighting. The site will be prone to graffiti and crime if it is not lit. I would also suggest some kind of fencing so that rogue balls don't end up in traffic on 40th Ave or Centre Street. The design could be made to be more interactive. What is going to draw people to this site? I think if we are trying to attract kids- try something that isn't offered in the area. ie a dirt pump track.
<ul style="list-style-type: none"> There should be more native plants and trees. I would like to see a low-maintenance, pollinator garden installed. Also please include an apiary to support our pollinators.
<ul style="list-style-type: none"> I would love to see the basketball court on one side and yoga/fitness area surrounded by perennial gardens with benches to sit on. Mix the two. Picnic space is great but may cause more of a mess.
<ul style="list-style-type: none"> maybe whole basketball court.
<ul style="list-style-type: none"> Eliminate basketball court. People bounce their ball from wherever they walk from which is very loud and disturbing.
<ul style="list-style-type: none"> get rid of the basketball stuff. That will drive the people who live nearby crazy, it's way too noisy. How about a giant checker board, chess board, shuffle board.
<ul style="list-style-type: none"> I would suggest just using two nets with this circular set up. I really like the idea of having more nets however if there are a couple of pick up games going on at the same time then there would be overlapping playing space used by the two different games. This could be disruptive and could potentially cause injuries due to the crowded space.



40 Avenue N.E. Park & Area Improvements

Stakeholder Report Back: What We Heard report
October 2021

<ul style="list-style-type: none"> • Hoops should be on outside. Current design will have more balls rolling onto other courts and missed shots flying into courts. Ask a basketball coach to design layout
<ul style="list-style-type: none"> • I would put some type of fountain as well as a covered multi use gazebo (not closed in) for shade .
<ul style="list-style-type: none"> • Add a watee feature or fountaun that burbles
<ul style="list-style-type: none"> • Not a fan of the basketball courts
<ul style="list-style-type: none"> • Add more benches or a couple of picnic tables- I believe it would draw more people to use the space (ie those from Tim Horton's)
<ul style="list-style-type: none"> • Not age appropriate for all the people in the neighborhood. Lots of young kids, not everyone has a basket ball or knows how to play it. Soccer is more popular with the demographic
<ul style="list-style-type: none"> • Include native bushes and plants. Consider clover over grass lawn. Consider more options to lounge
<ul style="list-style-type: none"> • I worry about the lack of supervision. The area doesn't seem very safe (cars, fights), and I don't envision myself using the picnic area as it is off a busy street. (I live in Tuxedo Park.)
<ul style="list-style-type: none"> • I'm concerned about the noise from a basketball court. Not just the court, but people bouncing balls walking over to the court can be loud too.
<ul style="list-style-type: none"> • Comunity water park instead
<ul style="list-style-type: none"> • Natural play elements for younger kids to play like in design 2 which is my favorite
<ul style="list-style-type: none"> • don't like the basket ball courts, brings troublesome kids and also right next to busy roads is not safe
<ul style="list-style-type: none"> • More trees, trees are great!
<ul style="list-style-type: none"> • I think option 2 is much better
<ul style="list-style-type: none"> • I don't love option 1. I don't think this will get as much use from different community members as Option 2, and just adds more of a concrete look to the area.
<ul style="list-style-type: none"> • Concerned that sheltered space might attract transient population seeking shelter. And while I support the need for housing, I am concerned it would deter or prevent others from using the space. Would bylaw or others be available to prevent this?
<ul style="list-style-type: none"> • More seating
<ul style="list-style-type: none"> • More Trees closer to Centre Street.
<ul style="list-style-type: none"> • Add space for parents to sit - sun protected like the bench swing at Confederation park
<ul style="list-style-type: none"> • Include bbq pits and several bike racks and wheelchair accesible (improve mobility access)
<ul style="list-style-type: none"> • Needs a place for smaller kids to play.
<ul style="list-style-type: none"> • Nothing
<ul style="list-style-type: none"> • Continue the sidewalk along Center Street
<ul style="list-style-type: none"> • Add bike racks and make sure to have additional benches
<ul style="list-style-type: none"> • Something more than a basketball court
<ul style="list-style-type: none"> • basketball courts are old
<ul style="list-style-type: none"> • Nothing
<ul style="list-style-type: none"> • More greenery and plantings would be nice, such as shrubs and small trees. I realize good lines for safety is important but a few more trees would be nice. I don't think the optional bike racks are necessary. I don't think people will realistically ride their bikes to this park b/c Centre Street and 40 ave are not bike friendly roads.
<ul style="list-style-type: none"> • A basketball court only appeals to a few people
<ul style="list-style-type: none"> • Take out the basketball court. Such a limited use of the space.
<ul style="list-style-type: none"> • Because Tim Hortons and Dairy Queen is right around the corner I would include multiple trash bin locations as I anticipate those would be drowning with garbage from these. As well i would include court yard street light if people would like to take a walk there in the evening



40 Avenue N.E. Park & Area Improvements

Stakeholder Report Back: What We Heard report

October 2021

and it won't be uncomfortable to be in the dark year round. I would also implement a playground zone around here - many many many people speed on center street.
<ul style="list-style-type: none"> • Sdfdsfs
<ul style="list-style-type: none"> • Why not combine aspects of 1 and 2. This would ensure a better chance for multi-use and not just youth hanging out.

Are there any other recreational activities you would like to see included in Design Option 1?
<ul style="list-style-type: none"> • Instead of basketball hoops, perhaps install a pickleball court (dimensions = approx 13 m long x 6m wide)? This would appeal better to the multi-generational residents in the area. This would be much less noisy than basketball hoops and if there were adjustable height netting, it could also be used as a badminton court, as the size is approximately the same. Could 2 or more courts be stacked on top of each other, making the lower ones freer of ice /snow & more usable in the winter?
<ul style="list-style-type: none"> • I like the list of recreational opportunities .
<ul style="list-style-type: none"> • Maybe some of the natural play elements from design 2 could be added to this design to increase its use.
<ul style="list-style-type: none"> • No
<ul style="list-style-type: none"> • Something interesting for littler kids to do (i.e. the tree stumps from Design Option 2), something to do in the winter (i.e. outdoor skating rink area)
<ul style="list-style-type: none"> • More trees, patio benches and shading. No court.
<ul style="list-style-type: none"> • Could we scrape the whole idea and put in a dirt pump track for all the young families that are moving into this neighbourhood? There are not a lot of safe areas for younger children to get out on their bikes and I think providing a dirt or paved pump track would see a lot of use. We have already seen how successful other recent pump tracks have been.
<ul style="list-style-type: none"> • See previous answer.
<ul style="list-style-type: none"> • Tennis/Badminton.
<ul style="list-style-type: none"> • Yes - I think the space is best suited for a Bike Pump Track.
<ul style="list-style-type: none"> • Swings
<ul style="list-style-type: none"> • Comments from a ten year old: No this is great.
<ul style="list-style-type: none"> • Places to encourage children to play/use imagination
<ul style="list-style-type: none"> • Fully fenced dog park
<ul style="list-style-type: none"> • Soccer nets or a spray park. Small planters bed instead of a full one.
<ul style="list-style-type: none"> • a spot for skating, both normal and ice
<ul style="list-style-type: none"> • No
<ul style="list-style-type: none"> • Something for preschool/elementary kids
<ul style="list-style-type: none"> • Maybe a more flexible court (typical square that can be multi-use) instead of round basketball for shooting hoops.
<ul style="list-style-type: none"> • Maybe a court that can be used for different game aswell
<ul style="list-style-type: none"> • N/A
<ul style="list-style-type: none"> • Winterized options for year round use. Even a Christmas display and bon fire run on weekends by city workers would be nice.
<ul style="list-style-type: none"> • A small playground with a slide
<ul style="list-style-type: none"> • something for young children. When young children use the space, it helps to set better tone.
<ul style="list-style-type: none"> • I would see more value in simple benches and play structures for kids than picnic tables. I would expect that the tables would be largely unused



40 Avenue N.E. Park & Area Improvements

Stakeholder Report Back: What We Heard report
October 2021

• More seats
• A ping-pong table or tether ball would be great. Another option would be installing a few frisby net-posts with chains to play frisby.
• Creative play zones
• A water feature, some fitness equipment, a little library and a garden. You can never have too many swing chairs.
• Pickleball
• Pickle ball?
• Basketball is sufficient, not sure of size but Beach volleyball courts would be welcome
• Make the court multi purpose for other sports
• Beach volleyball
• Dirt pump track might be something that is not offered anywhere in the vicinity.
• I would like to see some community gardens or an apiary with educational signage included.
• benches and shed all good.
• Little kid play equipment.
• stuff for little kids?
• Out door Exercise equipment for out side like Edworthy park .
• Maybe add a mini splash park for the young ones.
• Basketball hoops
• More picnic tables, more natural greenery
• Yes. Instead of basketball courts, consider a paved pump track. There are two in the city and are very well used. Many more children particularly older children can take advantage of this type of infrastructure yet the City seems reluctant to provide
• Soccer, more options for community to gather
• The current play area seems to be for older children and teens. If there is a play area for smaller children and parents, that may solve the issue of supervision. I also believe city or volunteer run activity sheds (ex: craft workshops, science experiences, etc) may benefit the community. Small pop up stores or farmers market can be there in the evenings
• Water park
• Picnics, movie in the park. An area that could be setup for Volleyball or tennis net or any other sport. I don't play basketball
• Nope, basketball is best.
• Good to have bike racks and options for exercise classes—boot camps etc
• None
• How about a gaga ball enclosure?
• Natural play area in treed area. Ping Pong
• Tether ball, hop scotch and natural elements to climb and explore.
• Include playground amenities for the children
• Kids playing area. Most likely to use the space.
• Nope
• A few more benches, for us older people to sit and gaze at the park or people watch on Center Street.
• Must have bike racks and maybe add a swing set
• Scooter or bike track around the perimeter, with painted lane lines for kids to enjoy
• basketball, soccer, general outside activities



40 Avenue N.E. Park & Area Improvements

Stakeholder Report Back: What We Heard report
October 2021

• No
• N/A
• No
• A pump track might be better. Broader age appeal.
• An outdoor playground fitness equipment!
• Sdfsdfds
• Fitness stations??

Do you have any additional questions regarding Design Option 1?
Is diagram to scale?
What are you doing for security? So much gets vandalized in this area. We can't even keep our bus stop glass shelters intact for a few months consecutively.
This area is close to rehab facilities... How will you make families feel safe coming here?
Will you perform weed control?
None
Pickleball
What preventative steps will be taken to prevent homeless from taking over this space? Where would yoga happen? It doesn't mix well with the traffic or basketball games. Why isn't there a text box for concerns about this plan?
why is there only two options available?
I think it would have been nice if the community would have been surveyed or engaged before the designs were put together. I'm not sure basketball hoops at this location will be used. The population on the east side of centre is more industrial than residential. Children would have to cross Centre Street to access- and could probably use the nets at Buchanan easier. Both designs look a little "underwhelming".
Why isn't there a larger natural area.
all good.
Guess the designers don't live near basketball courts - guys walking by bouncing their ball at all hours. Why do you want to disturb the neighbourhood?
Is the rendering to scale? Based on the current layout it appears that there is no space past the top of the key.
No
What happens to the trees after their "interim" function is done?
Will the fencing be sufficiently high to prevent balls from bouncing onto centre street or 40 Ave?
There's already basketball courts at schools close by i can go visit. Don't think we need another one. Something different that really adds more to the community engagement is better. Like a waterpark or the community garden are better ideas.
Will there be a place to do a BBQ?
No
Hoping for adequate all night lighting to deter crime and overnight camping
no
When we expect to be finished?



40 Avenue N.E. Park & Area Improvements

Stakeholder Report Back: What We Heard report
October 2021

Nope
Will there be "playground Signs" added to slow traffic? If so, where are these signs placed? Will both 40th Ave and Center Street have these signs added?
Why a round court?
no
No
No
sdfsdfs

What do you like about Design Option 2?

- We like the idea of a community garden with raised beds, trees, & water access. Highland Park CA has many residents interested in something like this. We'd like the trees to be fruit-bearing if possible. Seating is good, doesn't need to be a swing, but that's nice also. Could include more seating though. Like the Little Free Library (opportunity for design competition?). Noted that the other structures on site could also be an opportunity for design competition.
 - The Community Garden and Natural Play Area provides a better opportunity for community programming
 - I feel like not every empty lot is well suited for recreation; Centre & 40th is quite busy and I would worry about my own children getting there safely so I like the garden option better.
- Green space is always needed and I feel that this area has had many large spaces filled recently with apartment complexes (along Centre & 16th Ave E). A community garden area certainly unites residents, feeds people, educates, and provides many other opportunities to users.
- Opportunity for community to engage with plants
 - The community garden, the focus on nature
 - The garden. Inclusive to all demographics as well as connects them. The senior home, community centers and school could all be engaged to activate and maintain.
 - Community garden. Doesn't duplicate the basketball courts which are available at Buchanan School just one block to the south.
 - It's quiet. I don't want to hear a basketball bouncing all hours of the day.
 - The seating area and the fruit trees are a good addition
 - This is a better idea and better use of the space. It allows access to larger variety of people.
 - I love everything about this option - the community garden (I'd love to participate and get the kids involved), sensory garden (I have a special needs child who would benefit from this), little free library - these are all things we wish we could incorporate in our yard but inner city homes with detached garages don't allow the space for. What a gift to have these offerings in the community.
 - I like that it would add beauty to the community.
 - Community gardens are a great way of bringing people together.
 - I like community gardens in general, but this feels like a pretty high-traffic area for one
 - I love the idea of a swing bench.
 - No comments.
 - This idea really appeals. Community has lots of new families moving back in and an additional play area and community garden is probably more useful.
 - Children activities



40 Avenue N.E. Park & Area Improvements

Stakeholder Report Back: What We Heard report
October 2021

<ul style="list-style-type: none"> • The garden, and rec space. There's a Timmy's across the street so it's a nice place to sit down for a coffee.
<ul style="list-style-type: none"> • The sensory garden, and the natural spaces
<ul style="list-style-type: none"> • More tailored to all ages
<ul style="list-style-type: none"> • The swing but I feel like you can add it to option 1.
<ul style="list-style-type: none"> • Hi really like the idea of a community garden. So many people would benefit from the experience. The planting, weeding and results to share. The school children would learn a lot from this experience and so would the community as a whole.
<ul style="list-style-type: none"> • Community Gardens are great, we should have as many as possible. if it is at all feasible, it would be interesting to see a mixture between the two concepts, having a community garden section and basketball courts would be quite nice.
<ul style="list-style-type: none"> • All of it
<ul style="list-style-type: none"> • Given that Calgary is allergic to affordable housing, the least this city can do for its working class is help feed them and teach them a valuable skill. Community gardens are beneficial for insect populations, health and wellbeing, and developing community bonds in a more complex way than traditional "play" areas that are restricted to folks who play the game its for (or children).
<ul style="list-style-type: none"> • Love it, love the natural components & gross motor activities for younger kids
<ul style="list-style-type: none"> • Like the community garden feel to have more green space. Hope there is a community that feels passionately about this so that it can be maintained and used.
<ul style="list-style-type: none"> • That it feels like a open area
<ul style="list-style-type: none"> • There are enough basketballs in the area but not one community garden.
<ul style="list-style-type: none"> • Love this option and not a venue for drug use
<ul style="list-style-type: none"> • Idea is more suitable for that corner of the street.
<ul style="list-style-type: none"> • Useful for the community. Sounds attractive and could bring people together through working collaboratively.
<ul style="list-style-type: none"> • Everything!
<ul style="list-style-type: none"> • Like the natural playground and community garden. Would be neat to consider a winter activity that the space can convert to? Where community ice rink could go, or sledding or snow feature?
<ul style="list-style-type: none"> • It supports green spaces well. Encouraged outdoor play and bee health . Teaches kids how to grow your own food . Increased air quality by adding trees and plants .
<ul style="list-style-type: none"> • Everything. Sensory garden especially. Also believe community gardens provide more opportunities for community members to interact and feel calm in an outdoor space.
<ul style="list-style-type: none"> • The community garden and lower maintenance fee. I also like the added library and swing.
<ul style="list-style-type: none"> • It is a 'quiet space' in the city. Could be 'nice.
<ul style="list-style-type: none"> • Yes. Do this one. Cheaper and better than basketball
<ul style="list-style-type: none"> • I don't like this option. Everyone around this area has a home with a garden. Besides, climate in Calgary is not the best for gardening. I don't think community garden will be popular.
<ul style="list-style-type: none"> • Lots of natural elements. Opportunity to garden and enjoy nature.
<ul style="list-style-type: none"> • This would be welcome in the community.it is a quiet passive space. Gardening is an activity that everyone can enjoy.
<ul style="list-style-type: none"> • I live the idea of local food and the accessibility. Also love natural play areas.
<ul style="list-style-type: none"> • Community gardens are a great concept and should be incorporated all over the city in all parks and community areas
<ul style="list-style-type: none"> • I like the garden idea and mini library.



40 Avenue N.E. Park & Area Improvements

Stakeholder Report Back: What We Heard report
October 2021

• LOVE A GARDEN! Who has access, do people have to pay? Love the library.
• No one is going to do this or use it like you think
• Best option. Promotes community and interaction with other community members.
• sensory garden
• More open.
• Much better option for the space that implies a calm atmosphere despite being close to a busy intersection
• I love the opportunity to grow food, especially the fruit trees, which will provide food for many years, with little maintenance costs. And the natural play spaces.
• Everything except
• Option of engaging community and kids for gardening and learning skills
• There is nothing like it in our community yet. It would bring different members of the community together. Many in this community do not have the opportunity to garden, so this would offer them that opportunity. Green space is so important in a city.
• More options, Could involve wider range of people.
• The natural play area
• The amount of plants is positive
• It can be used by all ages within the community, unlike the basketball court.
• I love the idea of gardens for families to use. It's important for kids to learn what fresh food tastes like and how to grow a garden.
• Who will maintain the gardens? I called my community association and I guess the expectation is the CA will support and manage this? Why would the CA manage something like this that is not located at the CA, that seems quite challenging. Also, not sure a garden makes sense on such a busy roadway.
• The native plants, perennials, non-concrete paths, the garden boxes, and forested area
• Nice to see the activation of the site.
• Access to gardens, encourages people to care about the space/engages the community
• I absolutely love the native plants and the garden boxes.
• I like yoga/fitness space surrounded by gardens
• The commitment to native plants and perennials, and a natural space to work and play.
• Quiet and restful
• Gardens and trees. Hey, people could drink their coffees here. I like the natural climber made out of tree stumps.
• Personally I wouldn't really use the garden however I do like the covered swing benches and the natural play elements.
• The natural elements as well as the Orchard trees. With the upcoming development of the Seniors facility, the garden would be well utilized.
• I like the community garden and swing
• I want to see more fruit trees in city parks!
• I love the gardens and the greenery
• It will teach people to grow their own food.
• I like the idea of a community garden and play area. We have very little green space in Highland Park, so this would really enhance that aspect.
• The community garden easy access, esthically pleasing and functional. With schools in the neighborhood could help with teaching sustainability

• lower maintenance cost, i have younger kids, they can use it, pretty green space
• Much more natural.
• It sounds wonderful. More nature is always good and the lower cost is appealing.
• Community gathering space. Community garden could provide food to a lot of lower income people that live nearby. The one at Winston heights is being raided often.
• Fits a larger demographic, affordable, beautiful, provides food and community.
• Option 2 seems to be geared towards adults and their young children. Depending on the objective, this may benefit the most people. I envision myself going to the park to look at the garden. This seems the most accessible for people of all abilities (especially if one designs the gardens at different heights).
• I like the swing bench and the natural play elements.
• Community garden Trees It's more useful than the basketball court
• I love the idea in general. It being a community garden. And the
• the garden and the swing benches and the trees
• I like that it cleans up that area and is the cheaper option, I don't know that putting money towards basketball hoops is necessary with the schools in/near the area.
• I prefer 1.
• Everything. In my opinion, much better use of this space! More people in the neighbourhood would take part in gardening and recreational programs.
• We don't have anything like this option in our community already vs. Option 1 where there are places to play basketball already. I like that option 2 is more family friendly and could be used by young children and elderly people.
• Love love love this idea! Great way to live more sustainably, enjoy nature and learn about growing food. Love the library and sensory garden idea. Fitness classes etc. All very positive for entire community.
• I fully support Option 2, as I like the addition of green space and native species. With today's climate and other environmental issues, we should be using as much land space as possible for edible gardens and native species. I think the additional greenery will have more aesthetic impact. Interest in urban gardening in Calgary seems to be on the rise, and Highland Park residents currently do not have a community garden. Design 2 also incorporates a lot of different purposes.
• This would be my preference for this space. As far as I know, there isn't another community garden in the area, currently, while there is access to other basketball hoops. The chance to grow vegetables for people in this area would be wonderful.
• Access to affordable fresh food is a HUGE need according to the social workers and organizations in our neighborhood. This would be an amazing opportunity to help families grow their own.
• Community garden and trees
• The beauty of a garden.
• Community Garden
• The natural space for kids to play.
• Benefits wider age group. Can hold programs/classes for different age groups.
• Way more NATURAL looking, much cheaper to maintain.
• I would use it. A garden like space is needed in this area
• The idea of the garden but fear of foul play
• I feel this neighborhood can use a common area to bring residents together for calm activities.
• it is allowing people to engage in adult fitness (where they can also bring their children to learn about gardening healthy food). Good place for families to relax



40 Avenue N.E. Park & Area Improvements

Stakeholder Report Back: What We Heard report
October 2021

• Sensory garden is a great idea!
• I like the green space and that food could be grown
• Commiunity Gardens will benefits lower income families allowing access to fresh produce. This garden option is available for all ages. Facilities at Buchanan Elementary offer recreation options so I fell the community garden opens up to all age demographics in this area.
• LOVE this design and the opportunity for a community garden and usable space instead of furthering urban food deserts
• It's very flexible an will engage a wide range of community members. Community gardens are a great idea. Natural play spaces are relaxing and energizing bat the same time. I can see this getting a lot of use year round.
• Community garden
• There are many young kids in the neighbourhood and the covered swing along with the natural play elements will be awesome.
• A community garden is a fantastic idea to promote sustainable food growth in one's backyard.
• Sdfsdfs
• I prefer this option
• Community gardens.
• I don't like this option.

What would you do to improve the Design Option 2? Please tell us why.

• We think something interesting can be done with the garden box layout - a spiral perhaps that also creates an interesting walking path? The garden could add a drinking water fountain (and dog water fountain?). We'd like a food forest incorporated: native or climate-adapted fruit trees / shrubs. Needed: benches and/or rocks (within a shelter?) to sit on for possible future gardening seminars & have trees/shrubs planted in setback for screening / pollution control. HPCA should approve the design.
• Larger Garden and /or Play Area
• I would add an opportunity for urban beekeepers to use the space
• A native plant food forest or pollinator garden instead of an orchard
• I would prefer covered picnic tables instead of (or in addition to) a swing bench.
• Remove swinging bench and implement 10-15 two and four seated tables with shade covering. Allows for people who purchase coffee/ice cream across the street to sit down. A place for people to sit and have conversations while observing their gardens and for people to relax and read books from the little library.
• Ensure proper lighting to deter undesirable traffic congregating at night.
• The proposed design is fine. Perhaps more kid friendly toys (teeter totter, fort, etc.) could be incorporated.
• I really dislike the idea of a community garden in this area. I'd champion for a community garden at any of the surrounding community centres, but feel this is going to create a lot of additional work on volunteers that are already hard to come by in these communities.
• I would ensure it is all accessible.
• I think that the reality is it will be a community garden moreso than a recreation space. I don't think it will be utilized for this purpose, as it requires community members to organize these things. I think, because we already have a large and beautiful community garden, this would not be a good use of the space.



40 Avenue N.E. Park & Area Improvements

Stakeholder Report Back: What We Heard report
October 2021

<ul style="list-style-type: none"> I don't think this space (on the corner of Centre and 40th, two busy roads) would be conducive to this set up - i.e. I don't think people would use the space for this. Community gardens seem like places for tranquility and this space does not lend itself well to that. I would not bring my kids here to sit on a swing or attend an outdoor program.
<ul style="list-style-type: none"> Would like a play structure rather than a garden.
<ul style="list-style-type: none"> Add a couple of 4 person picnic tables like the ones found at Mount Pleasant Art Centre - community garden area. Larger tables attract homeless to sleep on or under bigger tables.
<ul style="list-style-type: none"> Something interactive for the younger kids
<ul style="list-style-type: none"> Have opportunities for those who play sports.
<ul style="list-style-type: none"> maybe setup a section of the garden to grow berries, since things like raspberries and black berries come back yearly. it would be a nice idea to be able to wander through and get some berries.
<ul style="list-style-type: none"> More trees along centre street for privacy
<ul style="list-style-type: none"> There's no reason not to make all of the boxes accessible. Make them accessible. Disabled people are a far larger proportion of the population than you seem to realise, and are incredibly poor. Options are limited for them as is, There's no need to restrict their access to things further, especially qhwn most recreation in this city costs money.
<ul style="list-style-type: none"> Could bike racks and the covered seating/shelter area like option 1 be included?
<ul style="list-style-type: none"> I personally feel like if we spilt and make a court on one side and make a smaller garden area on the other, it'll be a place where younger children can play but still somewhere a older sibling can enjoy as well
<ul style="list-style-type: none"> Rent out spots for people to grow vegetables.
<ul style="list-style-type: none">
<ul style="list-style-type: none"> Chained fence not cable fence.
<ul style="list-style-type: none"> Again, ensure that the tax money spent on a project like this won't end up destroyed by vandalism or punks. Ensure that any edible grown produce is donated to charities in need.
<ul style="list-style-type: none"> A community orchard
<ul style="list-style-type: none"> Add some winter transitions/features so the park can be used year-round.
<ul style="list-style-type: none"> Have cameras ! And make sure that the spaces are not homeless peoples living area.
<ul style="list-style-type: none"> I don't see a lot of value in the proposal. There are lots of areas in the city that are a short drive. Most people would go to those larger areas than a city lot. The exception would be families with young children and pre-teens. They will attend a lot sized park to socialize
<ul style="list-style-type: none"> Maybe add two swings or more benches
<ul style="list-style-type: none"> That the gardening raised beds have seating on a side or a notches out spot to roll a chair into. It can be difficult to garden on a side angle where as roll up accessibility allows the person to garden from the left, right and in front of them.
<ul style="list-style-type: none"> Bike racks!
<ul style="list-style-type: none"> Need a bit more string area and a small play are to allow someone to garden and a child can play
<ul style="list-style-type: none"> Add a BBALL Court and some fitness equipment, or a path for running. Lower-income people can get some fitness in for mental. physical health reasons. LOVE the swing chair.
<ul style="list-style-type: none"> No good
<ul style="list-style-type: none"> Love it!
<ul style="list-style-type: none"> sandpit/ mud kitchen
<ul style="list-style-type: none"> Again landscaping needs to be low.
<ul style="list-style-type: none"> More sound attenuation from the intersection... this is a very busy place.
<ul style="list-style-type: none"> We already have the rain garden. I don't think it would get much use. Not as good for families.



40 Avenue N.E. Park & Area Improvements

Stakeholder Report Back: What We Heard report
October 2021

<ul style="list-style-type: none"> • Add perennial fruit shrubs - berries!
<ul style="list-style-type: none"> • Bike racks
<ul style="list-style-type: none"> • I'm concerned about the broken down vehicles parked in that area and the condition of the alley. Would it be safe for kids or community members due to the damaged, broken and so many vehicles parked there while kids play. I have seen guys working on fixing those vehicles at odd hours and also blocking the alley with leaving their gates open in the alley, wires from the house to the vehicles for light and stuff. Would that space be part of the park or still a hazard.
<ul style="list-style-type: none"> • Perhaps add a small sheltered area
<ul style="list-style-type: none"> • Do people use community gardens? I would worry it would get wasted
<ul style="list-style-type: none"> • It's feels like there's less space for recreational activities
<ul style="list-style-type: none"> • What is the point of having a temporary orchard? Garden boxes are easy enough to dismantle but what will happen to these fruit trees in three years? Surely you don't mean to plant and then dig up mature trees.
<ul style="list-style-type: none"> • Bee hives would be a nice addition
<ul style="list-style-type: none"> • Why wasn't then community association consulted on designs prior to putting them online. I would like to see something different in this pace, not more of the same. What about a dirt pump track so I don't have to drive my kids across the city to find one. We could do something low key/low impact in this space.
<ul style="list-style-type: none"> • It looks very rigged, it would be cool to plant the forest less like a farm and more like a native forest. If the hope is to use the space as nature education. The design could look more natural.
<ul style="list-style-type: none"> • This side of Centre is more industrial. Not sure how the City will promote and attract people to use the garden boxes. Who will pay for the water? Both plans seem to be thrown together without any engagement with the community in advance or understanding of the site. What about a bee polinator garden? Something that would make this garden/site unique, different and attractive to folks. Lighting is also important. We have long dark nights, how can we make this a safe space?
<ul style="list-style-type: none"> • I would enlarge the natural area that is filled with native plants. I would also like to see a pollinator garden added. Also I would like to see an apiary or butterfly sanctuary installed.
<ul style="list-style-type: none"> • I would mix yoga space with gardens and have basketball court on the other side. Mix the two designs.
<ul style="list-style-type: none"> • To regenerate and build our natural ecology, I would suggest: Less focus on edible annuals in planters, more focus on perennials and biodiversity within the planting system. Monocropped trees in mulch is not diverse enough. Seek to attract birds, bees, butterflies. Build and feed the soil biology! Biodiverse planting increases the drought resistance, heat tolerance, water absorption, and carbon sequestration capacity of the land, which in turn will increase the property value over time.
<ul style="list-style-type: none"> • Benchs
<ul style="list-style-type: none"> • 1. A few benches. Could we please have somewhere to sit, maybe with a roof like on the swing you show. 2. This is a very busy, noisy corner. Could there be some Nanking Cherry bushes (or some other similar bush) planted along the street side fences? In time they would cut down the street noise a little. 3. Plant fewer trees and do the picnic shelter from the first design.
<ul style="list-style-type: none"> • However, benches under the trees in the shade for parents to sit and watch their children and the seniors that would also be utilizing it. Please add benches under the trees.
<ul style="list-style-type: none"> • I would put a couple covered swings as well as a water feature and drinking fountain
<ul style="list-style-type: none"> • If this is only a temporary park then the budget is way too high. I can accomplish the goal for 1/4 of the price or less. If it's going to be demolished in the next 10-15 years then here's what I recommend: don't bother with trees, waste of money. 1. Throw down grass over the whole lot, fence it in to keep stray



40 Avenue N.E. Park & Area Improvements

Stakeholder Report Back: What We Heard report
October 2021

balls from going into traffic 2. Lots of picnic tables 3. Huge raspberry patch around the perimeter 4. Open space for sports and activities
<ul style="list-style-type: none"> • More sitting space, picnic tables
<ul style="list-style-type: none"> • This space will be underused
<ul style="list-style-type: none"> • It looks wonderful the way it is.
<ul style="list-style-type: none"> • I like the design.
<ul style="list-style-type: none"> • Add more benches/ picnic tables-I believe it would draw more people to use the space (ie those from Tim Horton's) and enjoy the natural setting
<ul style="list-style-type: none"> • Community garden requires a lot of planning and commitment from the community, especially when others steal from it, thinking the food actually belongs to the community and not the people who take care of the beds. Make a flower or botanical section, sunflower wall or something else
<ul style="list-style-type: none"> • Making sure it is wheelchair accessible, more shrubs, look into a keyhole garden and consider alternatives to grass lawn to reduce costs of upkeep.
<ul style="list-style-type: none"> • I think that city or community run programs out of this park would benefit the community. the addition of a small playground may benefit the park.
<ul style="list-style-type: none"> • I would name the plants to the owners name so it does not get mixed up
<ul style="list-style-type: none"> • I would love a bit of a mix between design 1 and 2. I'd love it to have more benches or areas to sit and rest or talk. Maybe have an art outdoor workshop
<ul style="list-style-type: none"> • I would do option 1 instead.
<ul style="list-style-type: none"> • It would be nice if there was more seating and a covered area.
<ul style="list-style-type: none"> • Nothing it sounds wonderful.
<ul style="list-style-type: none"> • Space permitting, add some other play fixtures such as a sandbox so that kids have something to play with while their parents tend to the garden.
<ul style="list-style-type: none"> • Just keep it as accessible and safe was possible...fence on road sides to keep kids safe while families garden.
<ul style="list-style-type: none"> • Picnic area
<ul style="list-style-type: none"> • Small play structure or something for kids to play and promote physical activity.
<ul style="list-style-type: none"> • Having some of the features of Design 1 to make it more inclusive of other recreational activities
<ul style="list-style-type: none"> • More seating options for others.
<ul style="list-style-type: none"> • Pavement for jogging around the park, benches, water fountain
<ul style="list-style-type: none"> • Continue the sidewalk along Center Street
<ul style="list-style-type: none"> • Bike racks. Maybes a few tables and a kids swing set
<ul style="list-style-type: none"> • More greenery and a calm place to be
<ul style="list-style-type: none"> • Adding an area where seniors from Wing Kei can do morning exercises such as Tai Chi or light dancing.
<ul style="list-style-type: none"> • more children activities. Swings, play structures etc.
<ul style="list-style-type: none"> • I don't know how much a "little library" would be used. Also, I don't know how much a community garden would be used as well. This is not my choice.
<ul style="list-style-type: none"> • Add a couple benches throughout the natural play area. Add garbage bins. Additional lighting to south end of the greenspace, possible motion/ security lighting on corners of the fencing.
<ul style="list-style-type: none"> • Love it all, perhaps more seating for accessibility
<ul style="list-style-type: none"> • More garden beds, larger play area with more play elements.
<ul style="list-style-type: none"> • Sdfsdfs
<ul style="list-style-type: none"> • As above perhaps combine aspects of both. Then it will not just be for youth but adults as well.

Are there any other recreational activities you would like to see included in Design Option 2?

- Can we include a smallish shelter / building / outdoor classroom that is protected with partial walls against the north and west winds? It would be good to also have some space to do outdoor exercise, like yoga or Tai Chi, especially with the Wing Kei Seniors' Residence going in across the street. Design it for winter/cold weather use also: outdoor fireplace with benches/seating rocks? Can part of the greenspace be artificial grass for recreation & limiting weeds/wear & tear?
- Theatre and/or Music
- Include a covered picnic table for year round use
- Something to do in the winter (i.e. outdoor skating rink area)
- More hills for people to lay on and have a picnic. One large picnic table with 16-20 seats for having people sit and join a class. Add local plants and flowers accompanied by educational plaques as to what the growing season is, how seeds work. What Calgary local plants there are. The importance of taking care of our planet.
- See above
- I would like the natural playground/exploration area to also be accessible to all abilities.
- See answer in Design Option 1
- Play structure.
- No
- Fully fenced dog park
- Basketball, soccer, floor hockey
- maybe setup a dedicated yoga area.
- No
- The bike racks and the shelter with seats like option 1 would be a good addition!
- Games like life sized chess or fill four
- Walking pathes and things for all demographics not just children
- N/A
- Perhaps color ! Colors that bees like !
- No
- I would like this design to pull in the youngest to the elderly, so they can enjoy the space together. Hopscotch to gardening .
- BBall court, running path, fitness equip. Water feature.
- Pickleball courts
- no
- A mud kitchen!
- Slacklining
- It would be nice to have some kind space for groups to gather and share knowledge, info may be something that would indigenous culture, a small tipi that could act as shelter and covered space..
- The area is home to families but demographically it is young adults. Considering there's a number of playgrounds dedicated for kids in the area, it would be good to have something for adults ie. Space for park games
- The community ice rinks have been a god send. They are also full. Add some winter activities.
- Maybe a small splash park or some water feature.
- See above.



40 Avenue N.E. Park & Area Improvements

Stakeholder Report Back: What We Heard report
October 2021

<ul style="list-style-type: none"> Boulder elements, or rock like natural play elements. An apiary to help the garden boxes. Or perhaps a stage/gazebo for community events.
<ul style="list-style-type: none"> I would like to see an apiary or butterfly habitat installed, perhaps with educational signage. Please have more community garden boxes.
<ul style="list-style-type: none"> A sandbox? A giant checker board, chess board, or shuffle board?
<ul style="list-style-type: none"> As many natural climbing elements for the children would be amazing!
<ul style="list-style-type: none"> A labyrinth or maze type area with the garden boxes throughout .
<ul style="list-style-type: none"> No
<ul style="list-style-type: none"> Bike park
<ul style="list-style-type: none"> I am sure that what has been decided will work.
<ul style="list-style-type: none"> Space to play and watch kids occupy themselves
<ul style="list-style-type: none"> Soccer nets in field on left
<ul style="list-style-type: none"> Have a swing set
<ul style="list-style-type: none"> Sports and play for kids and preteens Bike rike to get there biking. I would like to go there with my son riding our bikes from home and have a snack after working on the garden. And where we can pack harvested food. Maybe berries, tomatoes, carrots, etc.
<ul style="list-style-type: none"> It would be nice if the children's daycare across the street could be involved with the garden.
<ul style="list-style-type: none"> No, they all look great
<ul style="list-style-type: none"> How about a disc swing or gaga ball enclosure for kids to play while parents garden?
<ul style="list-style-type: none"> Picnic area
<ul style="list-style-type: none"> Bike racks, picnic tables
<ul style="list-style-type: none"> Yoga
<ul style="list-style-type: none"> Add more benches for more people to sit and absorb the beauty.
<ul style="list-style-type: none"> Kids natural play structures
<ul style="list-style-type: none"> Tai chi or group activities for seniors
<ul style="list-style-type: none"> sports can be included
<ul style="list-style-type: none"> A children's playaround or area. Perhaps a sandbox?
<ul style="list-style-type: none"> No
<ul style="list-style-type: none"> Is there space for a small pump track like at Silver Springs? Or a zip line?
<ul style="list-style-type: none"> Splash park.
<ul style="list-style-type: none"> sd fsfd

Do you have any additional questions regarding Design Option 2?

Additional comments: opportunities for plantings, water service, screening, washrooms, garbage cans, etc. This is at the N-S & E-W cross-town bus line connections and adjacent to a major pathway system. Does a bit of parking need to be incorporated for park users, with some space for an emergency vehicle? Need to find a balance between installing a barrier to reduce noise, wind & pollution and ensure safety from criminal activity. Cameras on site with signage? Opportunity for public art.

Addition of hardy fruit trees

No

What will lighting be like?

This is a fantastic concept.



40 Avenue N.E. Park & Area Improvements

Stakeholder Report Back: What We Heard report
October 2021

Who will manage the allotment of community garden plots? Community association? I believe assigning the plots to specific families to garden would build ownership and community.
How and who came up with these two designs? Was there any community discussion before these 2 ideas were developed?
I don't believe that the community garden will be kept up as well as it should seeing as the neighborhood is far more rental properties than owners. So this to me is not the most sensible option.
No.
Since this is for the short term, keep it simple and cost effective please. Kids are just as happy crawling over a tree trunk that has been laid sideways rather than installing swing facilities that can be vandalized.
Was a off leash dog park considered? Do you in realize there is already a comm you nity garden very close by?
Like my first comment for design 1. Greenview industrial area attracts some of Calgary's homeless, with children playing i'm afraid the benches and garden area will invite them to sleep. Unsure how to resolve this other than secercuity or have the space constantly busy with people playing and using the space for what it is intended.
No
No
Please be sure to incorporate shaded and/or covered seating and accessible drinkable water as well. Gardening is hard work performed in the sun, it is very important that people stay hydrated and shaded to prevent heat illness in the summer months. This is especially critical for this as the community members likely to use this space are more vulnerable.
Nope y'all doing amazing tho ig
We don't need more public basketball hoops in our neighbourhood; we already have some at Buchanan School & James Fowler School (respectively less than 2 & 5 blocks away), and they aren't over-capacity. Basketball dribbling & backboard use can be very loud and invasive for the adjacent, fairly intensive, residential use that this area is already transitioning to. Serious consideration could be given to lighting & security. Opportunity to do something very interesting vs what has been proposed.
I would not install a basketball court.
not sure how well the space can be shared among different users
More than two picnic tables, spaced apart more
I believe there is better ways to include a wider demographic in this social space (basketball courts most likely engage males from 12-17 although I dont have stats to back that up). There is a basketball court at the school across the street and from what I have observed it does not get activated very much.
I think this design requires some lighting in the park, and could you with more seating. Also how would this park be used during the winter months?
I wish there were elements appealing to young children also. There are a lot of young families in Highland Park.
Another option, instead of a basketball court, are nets for tennis/badminton. This would truly be a new and different option that would enhance the community.
A basketball court like this has limited use - it's not a full court for games but young kids (mine) wouldn't likely play here because the hoop height presumably would be too high. Moreover there are basketball courts at most schools including some nearby.
More landscaping along street, more interesting/inviting/multi-use court area
A bike rack and perhaps a few swings.
Comments from a ten year old: A play structure would be fun.
I would suggest using 4 person square picnic table like Mount Pleasant Art Centre - community garden area. The larger tables will attract homeless to sleep on benches or tables. (We have enough of that problem right now in the community.) Buchanan School has 5 basketball nets which are well used with great space to run



40 Avenue N.E. Park & Area Improvements

Stakeholder Report Back: What We Heard report
October 2021

around so not sure adding 4 more nets so close to traffic area is wise. Make the basket ball nets kid sized rather than adult sized (lower and smaller).
More trees
Just basketball courts and not much else to encourage children to play
More benches, fire pits if able in park this size
More options for kids of all ages in the area, currently designed for older kid use only
Adding bike racks.
maybe plant some fruit bearing trees in the area.
Remove basketball court
Not pave it over. The city needs actual, beneficial, and accessible green space for psychological wellness.
I dislike the lack of young children activities. Our communities are filling with younger children, more than ever and love the idea of another, easily accessible place to play!
Instead of a basketball court, would a multi-use court be possible so people can play volleyball, badminton, etc.
Probably add fence around the courtyard so if you ever do install more greenery or other thing we would get damaged from the basketball/the ppl that are playing on the court.
Need to not have any hidden areas for drug users or over night stays from homeless
How long would this take to develop?
Can you ensure this space won't be used as a sleeping area for the homeless or recovering addicts? Because that would be a huge deterrent for many people who could benefit from using this area.
Will someone continue to maintain the gardens in the absence of volunteers? It would be unsightly if overrun
Will you perform weed control?
How soon can you build this? It looks so beautiful and welcoming. Please choose this one! It's appropriate for all ages and will help the community face the climate crisis. It will also be good for mental and physical health.
I would choose option 2.
It seems that it is being focused on the senior age group, and it may not get the intended value.
No
No
Both designs have merit and would be valuable to the community as we do not have a lot of green space. Both designs would need to be policed more due to drug activity in the neighborhood.
Concerned about homeless or other unfavourable activities taking over. It's a prime spot for this
I love this idea!
There is lot of late night activities and that alley can be dark, especially in winter when days are shorter. It would be nice to have good lighting not just on street but all sides of the park.
Just a note that this area tends to be hilly. There are many seniors who bought land here originally and young singles/couples renting in the area. Less families, but those who have are new to the neighbourhood. There are a few schools within walking distance so no need to duplicate services. You will face outrage for spending on a temporary park. It should be permanent or less expensive.
Please please please pick this option!
Will the park be working with local garden groups/girl guides/school for the planning?
Both designs are kind of underwhelming. I'm not sure they will be used as currently proposed. It would have been good to go out to the community in advance and see what unique opportunity exists and then design two options. These both feel very "institutional" like they would be found as "stock" options in a housing project development.
Please make the natural area as large as possible. Include a hedgerow for bird and pollinator habitat. Please include native grasses and perennial flowers.
The proposal for Design Option 2 needs re-writing. The sentences are not clear, and the vision needs clarifying. Edible gardens? For whom? Are these private, individual garden beds that need booking through the



40 Avenue N.E. Park & Area Improvements

Stakeholder Report Back: What We Heard report
October 2021

community, or does the food get donated? Right now Design 1 looks like the clear choice out of the two ideas, despite being much worse for the environment.
I guess what I'm wondering is, could Design 1 and Design 2 kind of be combined if you GET RID OF THE BASKETBALL COURT.
Do you have to rent the planters or is it open to everyone? If it is open to everyone is it first come first serve? How do you reserve a planter?
I find the lay out boring and I inviting . Perhaps feature a local artist
A simple park of grass and picnic tables would better accomplish the goal of promoting community than basketball courts or garden beds. Leave open space for sports and activities and you're golden!
It seems like a great idea but I don't think people would actually use it.
Design two is my favorite option
Who would be responsible for the garden
Using clover, creeping thyme, and other cover crops holds more moisture in the ground reducing the costs of watering and adds a beauty for years to come
Will there be a lot of need for community members to keep up the garden portion? If so, are there interested people near by? I like this design better either way.
No
How will the planting areas be distributed between members of the community?
I think it's important to ensure the entire area is well lit (regardless of option 1 or 2) to ensure people aren't loitering there, sleeping there or otherwise using the area other than intended.
Will you be able to book a space to garden? Or is it free for all? Cost?
Long term could the gardens be kept or moved once development begins?
Could there be more garden beds included? Who will use the gardens?
No
Will there be "playground Signs" added to slow traffic? If so, where are these signs placed? Will both 40th Ave and Center Street have these signs added?
How will be managing the community garden? What types for rental fees?
no
N/A
How would you about being able to have a community garden box? I live in the community and would like to have one for personal use.
LOVE community gardens. Feel they add value to the communities and show care for the communities and citizens.
Curious if the implemented seating will be anti-human rights - aka bar unhoused neighbours from sleeping there. Allow people comfort!!
sd fsfd
Is the city going to put in the garden and maintain it?



40 Avenue N.E. Park & Area Improvements

Stakeholder Report Back: What We Heard report
October 2021

Appendix 2 – Portal Page Questions and Answers

Question	Answer
Cement Cracks/weeds - If there is work done for new sidewalks could there also be work done to patch up old sidewalks that have cracks/broken due to deterioration from weeds and erosion?	Thank you for your comment. The project will include the installation of new sidewalks that will connect to existing sidewalks. If you are able to provide the location of the sidewalks that needs repair, we will add to future work.
Bike paths - How wide are the sidewalks being built? In this area it's all automotive/industrial land that makes it uneasy to bike on the main road and people drive with great speed. Would there be dedicated future bike lanes implemented as well? It would make the community more welcoming and aesthetically pleasing vs just an industrial ghetto location.	Thanks for your comments. Sidewalk widths can vary; depending on the location and available space, we will build the proposed sidewalks on public land to standard along the appropriate roadway. Bike lanes are not part of the project, but we will include your suggestion as part of potential future work.
36th ave/Nose Creek Path - Could there be potential to create a bridge/sidewalk that connects 32 ave to Nose Creek Path across the river? Could there be a dedicated sidewalk/cycle lane on the south side of 36th ave NE from Edmonton Trail to connect to 32nd ave? The stretch from EDM trail on 36th to 32nd ave does not have safe sidewalks or cyclist nor pedestrians.	[Removed], Thanks for your comments. The current plan has a proposed pathway from the east side of Edmonton Trail to 32 Avenue, towards the current regional pathway. 36 Avenue is not part of the scope of work. There are future plans to have a bikeway on 36 Avenue N.E. from 32 Avenue N.E. to 4 Street N.W. Currently, on 36 Avenue N.E., from Edmonton Trail to 6 Street N.E., there is a sidewalk on the south side. From 6 Street N.E. to 32 Avenue N.E., the sidewalk is on the north side. We will include your comments in our report.
Re: 40 Ave NE Park & Area Improvements. Would it be possible to install a pedestrian crossing at Center St. and Laycock Dr.? - Hello - It would be nice to be able to cross here instead of having to walk to the corner of Center St. and McKnight. There is so much traffic on Center Street. If pedestrians could cross here, they could continue on the much quieter Laycock Dr.	Thank you for your comments. Regarding the east – west crossing on Centre Street N and Laycock Drive, although this is not within the scope of the project, it has been noted for future consideration

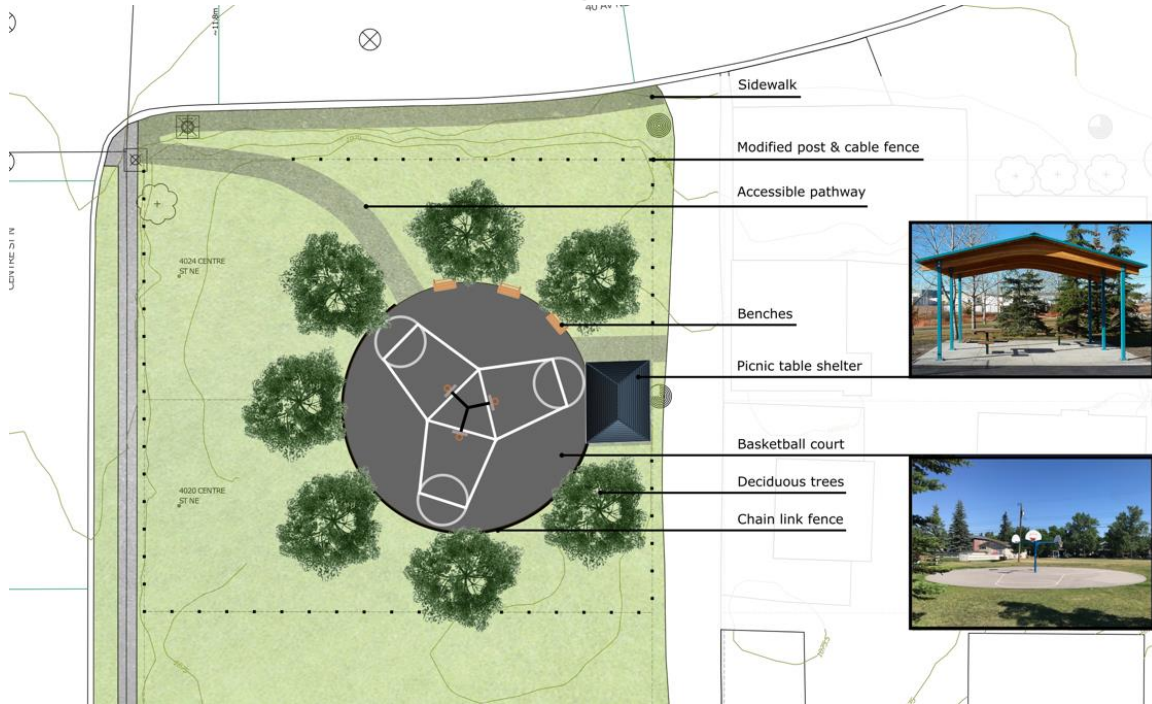


40 Avenue N.E. Park & Area Improvements

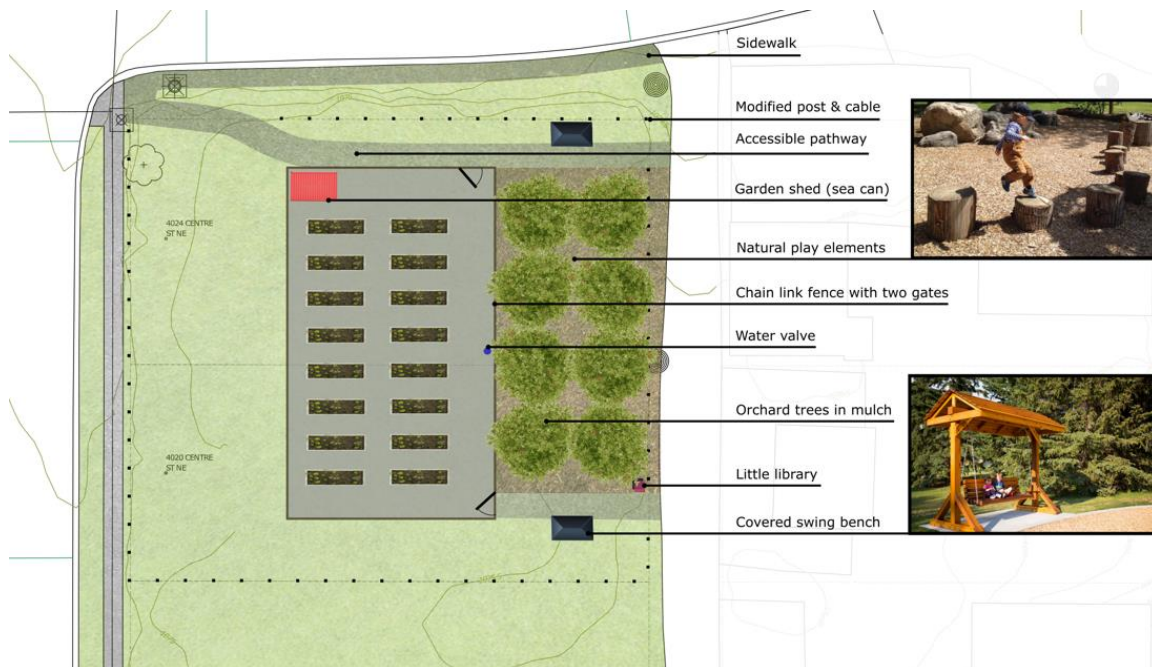
Stakeholder Report Back: What We Heard report
October 2021

<p>Re:40 Ave NE Park & Area Improvements Could you look through the residential parts of the neighbourhood for all the missing sidewalks? - Hello - Sidewalks on 40 Ave. NE, 36 Ave NE, 35 Ave. N.E seem to be a low priority to me. Shouldn't you go thru the residential part of the neighbourhood and have all THOSE missing sidewalks added? And install corner sidewalk accesses for strollers and wheelchairs? This neighbourhood is really lacking those.</p>	<p>Thanks for your feedback. The proposed sidewalk improvements will leverage on existing sidewalks. The City is committed to providing access for all people of all ages, whether they walk, wheel or drive. We will include your comments in our report.</p>
<p>Why are actual sidewalks not on the map? - My daughter lives on the south side of 38 St. NE between 2 and Centre Streets. There is sidewalk on that side that goes from 2 St. to Centre (not shown on the map) but not on the north side. The south side is in constant shade, especially in winter, and is on a very steep hill. Pedestrians would be safer walking on a north sidewalk as the sun would prevent ice build up. I also think pedestrian lights at Laycock and Centre St. would be nice.</p>	<p>Thank you for your comments regarding the sidewalk and pedestrian lighting. We will include them in our report.</p>
<p>Additional sidewalks - Why isn't 38th Ave between Centre Street and 1 ST NE being considered for sidewalks? The block from centre to centre A street has no sidewalk on the north side, and the block from centre A to 1 ST NE has half a side walk on the north side. These two blocks are a very steep hill and if the south side is icy in the winter, there is no alternative for pedestrians. Also, pedestrians often start walking up the half block of sidewalk and then j-walk across or walk up the middle of the street.</p>	<p>Thank you for your comments. Currently, on 38 Avenue N.E., between Centre Street and 1 Street N.E., there are sidewalks on the south side. We will include your comments about missing sidewalks on the north side of 38 Avenue N.E. in our report.</p>

Appendix 3 – Concept Renderings



Park Design Option 1



Park Design Option 2