

Archaeology

Medicine Hill / Paskapoo Slopes is home to an archaeological landscape of provincial significance.

Why this area is significant

More than **50 archaeological sites** have been identified across the landscape to date. The features of the landscape made it the perfect location for hunting bison using the pound method.

For more than 2,000 years, people repeatedly chose Medicine Hill / Paskapoo Slopes as a hunting location. This was not because there were no other options, but because this place worked exceptionally well. The natural landscape, along with access to wood and water, supported effective and sustainable hunting practices. The repeated use of Medicine Hill / Paskapoo Slopes over many generations speaks to the success of this approach and the deep connection people had to this land. Our goal is to strike that balance, preserving the area's rich history while supporting safe and respectful public use now and into the future.

How we will take this into consideration

A **Historical Resources Management Plan** is being developed to identify key approaches for the area, with site locations kept confidential per Provincial requirements.

Areas with shallow or exposed archaeological materials will receive extra protection, and any nearby changes will trigger further study. Sites with materials buried deeper underground are considered less vulnerable to regular park use but will still be monitored.

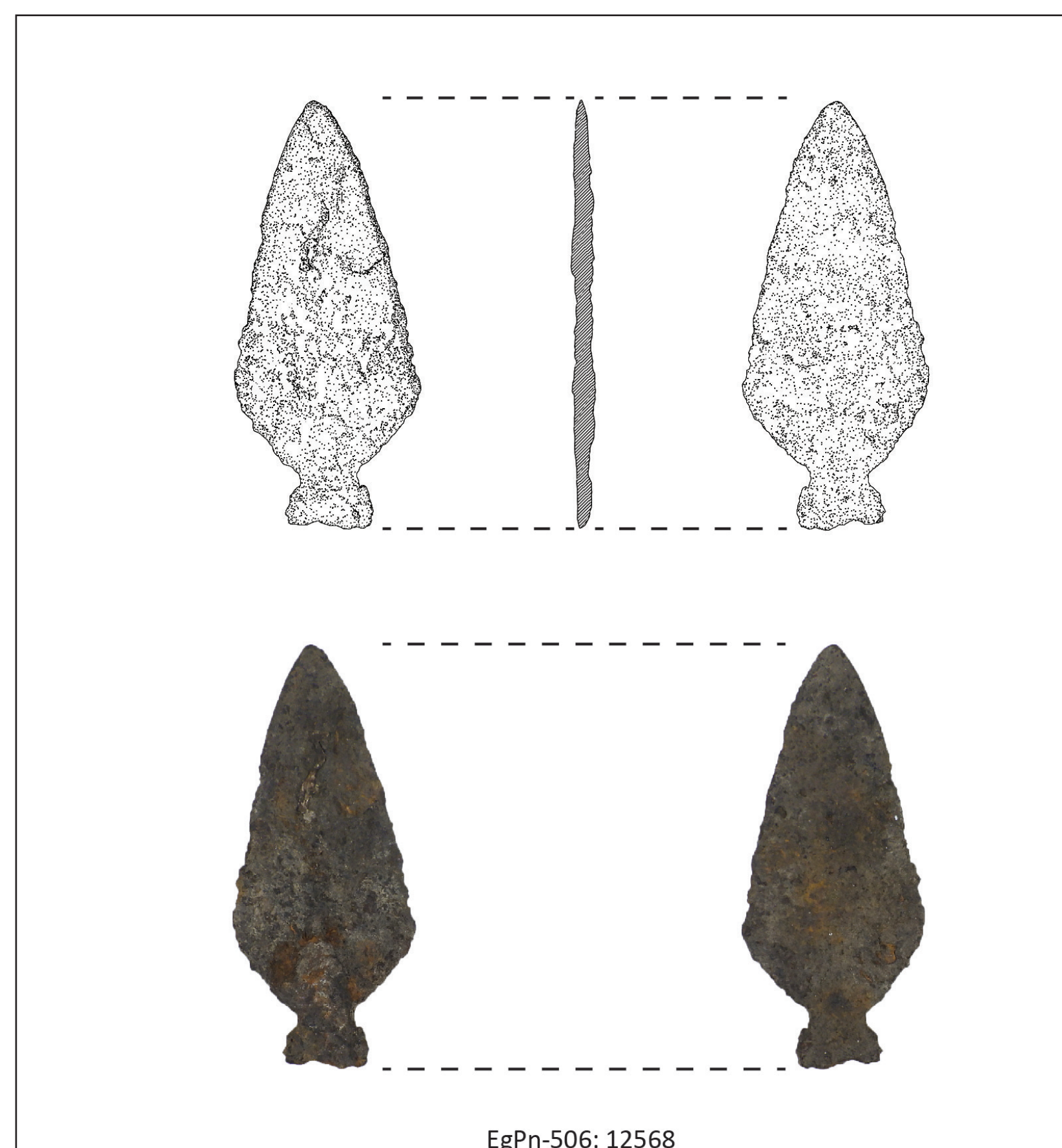
All ground disturbances within the park are reviewed for potential archaeological impact, and Historical Resources Act approval is required for any development or rehabilitation work.

Design strategies will include:

- Avoiding impacts where possible, including rerouting or decommissioning trails that affect archaeological resource
- Undertaking mitigation measures, such as salvage excavations, when impacts cannot be avoided
- Developing interpretive content to help visitors understand and respect the area's significance
- Targeted improvements to specific trail segments to reduce erosion and stabilize trail surfaces



Excavation at Medicine Hill



Metal point found at Medicine Hill



A roasting pit, to dry and prepare bison meat



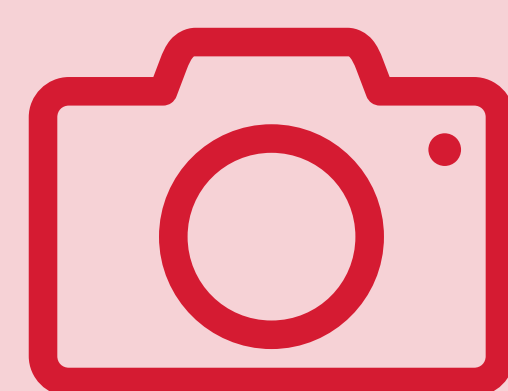
Bison skull excavated in Calgary

What to do if you find something:



Do not remove

Archaeological materials are protected under the Alberta Historical Resources Act



Record the location

Take a photo of the artifact (close-up and wide angle) and note the area without damaging the site



Report to the City

Contact 311 to request the Parks Cultural Landscape team be notified